

Advanced Supplier Management

Analyse and manage your supplier risks

Introduction

In an uncertain world, businesses look for certainty. They need data, operations, and processes that they can rely on. In this climate, managing and strengthening supplier relationships will be key to facing the future.

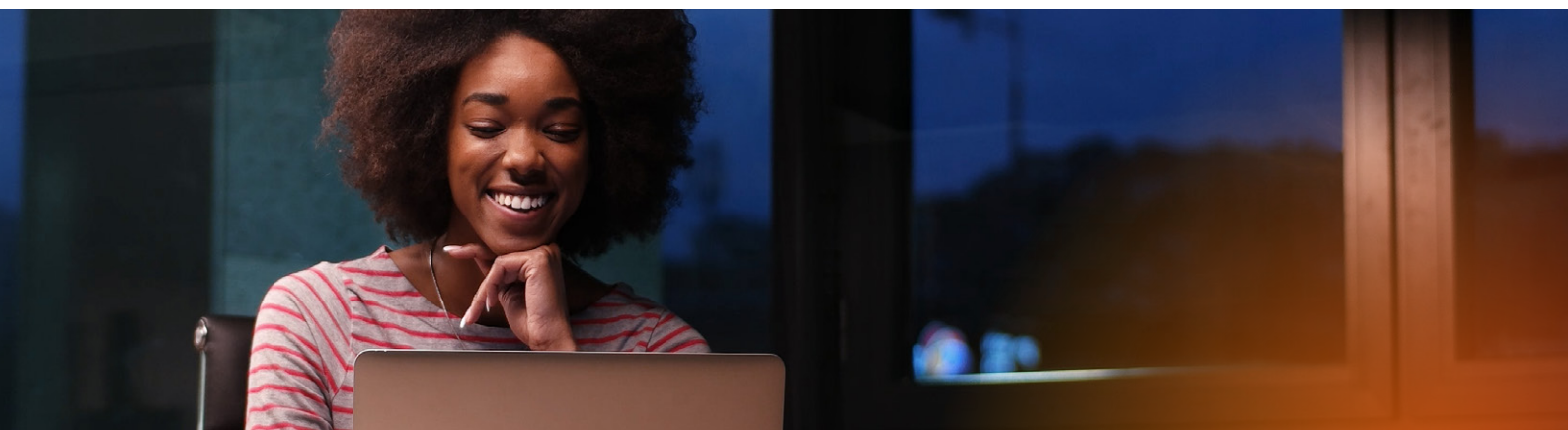
The last few years have seen huge upheaval to businesses and the way they operate. Changing consumer behaviours, global supply chain disruptions and geopolitical turbulence means resilience is more crucial than ever.

Today, many businesses are seeking to better manage their supplier continuity and relationships to protect their brand reputation, gain control over spend, ensure compliance, and make better decisions in the face of change.

For many organisations, this means a complete review of current supplier relationships and spend management practices are required to continue to be successful. Aligning organisational values to spend is more critical than ever before – the value is in how organisations spend, not just what they spend.

At Advanced, we help organisations positively impact their environment, their people and their business value through effective spend and supplier management solutions. We help them optimise spend and supplier relationships to drive performing and resilient organisations.

We help businesses
optimise spend
and supplier
relationships
to drive performing
and resilient
organisations.



Gain complete control over your supplier relationships

Engaging new suppliers and conducting ongoing due diligence with existing suppliers is typically a manual, paper-heavy process. When your procurement teams are so busy dealing with paperwork, they have little to no time to work on more important tasks. It's not an optimal experience, for you or your suppliers.

Advanced Supplier Management makes doing business with suppliers faster, simpler, and more transparent. Our platform gives you visibility over your suppliers' performance in real time, allowing you to prequalify, onboard and manage your suppliers with real peace of mind.

It helps to make sure your organisation is compliant with a clear view of who your suppliers are and the policies, insurances and certifications they adhere to. You can keep track of spend and satisfaction information from your internal customers to understand the quality of your supplier relationships. And you will gain insights into environmental, social and governance (ESG) objectives and broader risk management. All of this information helps make faster, more informed and more strategic decisions.

Advanced Supplier Management allows you to:

Determine risk instantly

Effortlessly assess and deep dive into your suppliers – and even their suppliers – to understand more about key risks such as financial performance, ownership structures, and crucial social impact indicators such as modern slavery and human trafficking exposure.

Accurately assess and report on ESG

Improve your visibility into key ESG indicators across your supply base. Drive ESG reporting accuracy with structured assessments delivered routinely across your suppliers. Create category-based scorecards to compare relevant suppliers and set recurring reminders and tasks that encourage ongoing positive change.

Easily collaborate with suppliers

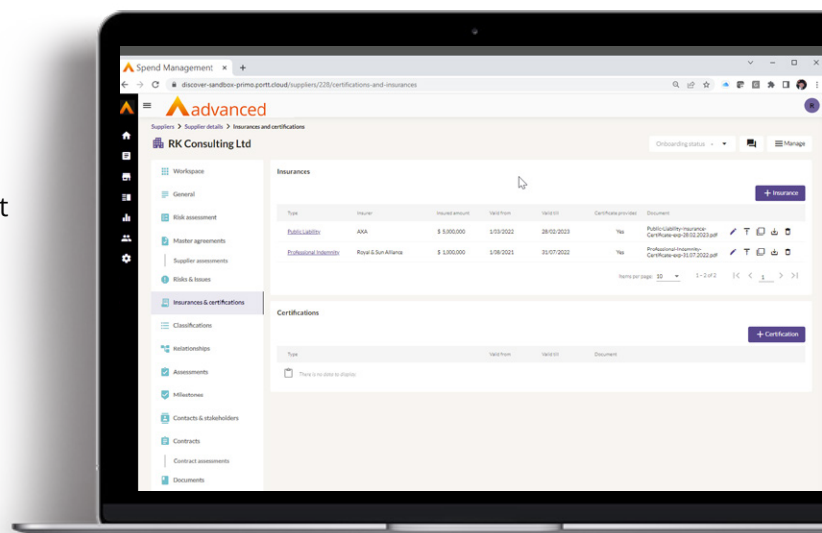
Our self-service and information-sharing functionality allows easy collaboration with suppliers for effective contract, supplier and procurement risk management.

Simplify supplier classification

Eliminate the guesswork. Model and tier your supplier base according to your unique priorities. Simply 'tag' your suppliers within your classifications library, and Advanced Supplier Management will automate all the associated plans and tasks.

Store supplier contracts

Gain a high level of risk management efficiency while giving your team strategic insight into key dates and contract deliverables.



Stay resilient in the face of change

Advanced Supplier Management's powerful capabilities allow you to manage your suppliers, your risks, your performance and your due diligence.

Supplier management

Supplier management plans are the system-generated outline of activities, actions, milestones, assessments, risks, and meetings that underpin your core business processes. Advanced Supplier Management will automatically generate this framework when you launch a management plan for any supplier.

Risk management

Advanced Supplier Management provides you with the tools you need to assess, manage, and mitigate your supplier risk. With a comprehensive view of third-party relationships, you'll be able to understand the impact any disruption might have on your business.

Using an extensive range of public, private and supplier direct data sources, Advanced Supplier Management will take you far beyond traditional risk management practices. You'll gain a full view of regulatory compliance, supply chain risk and supplier integrity, including negative media – helping you to understand, mitigate, manage and ultimately predict risk.

Plus, it will help you meet your legislative compliance with the tools to design, assess, mitigate, and report on modern slavery.

Performance management

Get clear visibility of supplier and stakeholder performance with our intelligent supplier management platform. Advanced Supplier Management will allow you to:

- Identify, tier, and link your suppliers to industry, service and individual capabilities
- Create scoring frameworks and measure contract achievements across multiple data points
- Create bespoke assessments to gain a 360-degree overview of supplier performance
- Understand and effectively use qualitative feedback within your supplier meetings to improve outcomes

What's more, you can effortlessly manage innovation with your suppliers by enabling detailed collaboration as part of your supplier management processes.

Due diligence

Gain complete transparency of your suppliers (and their suppliers) and empower your team to create and conduct effective supplier due diligence processes.



Integrate seamlessly into your systems

Advanced Supplier Management requires no code to get started; our intuitive setup engine will make sure it fits your existing workflows. Receive instant access, extensive automation and workflow capabilities, plus all the support you need from our friendly and experienced team.

Advanced Supplier Management will help you positively impact your environment, people and business value through effective spend and supplier management. It will help you transform in four ways:

1. Enable strategic decision-making

Transform accurate data from your solutions into knowledge and insights to improve strategic capability and drive business growth.

2. Drive cost-efficient processes

Reduce maverick spend, eliminate manual intervention and ensure complete visibility across supplier, contracts, spend and invoices.

3. Achieve ESG goals

Ensuring your organisation and suppliers adhere to ESG initiatives is critical to achieving sustainable practices and building a good brand reputation.

4. Be easier to do business with

Gain complete control over your relationships with suppliers, contracts and purchasing processes – making it easier for your employees and your external stakeholders to engage and do business with you, and ensuring your business stays resilient with simple processes.

The result? Optimising spend and supplier relationships to drive your organisation's performance.

Advanced Supplier Management can help you:

- Evaluate the risk and performance of your suppliers
- Assess your suppliers' risk portfolios
- Incorporate automation rules that immediately create dynamic action plans
- Categorise your suppliers
- Integrate quickly and simply into your existing systems
- Mitigate your overall risk
- Free up time for more impactful tasks
- Scale up as your business requires
- Increase productivity
- Reduce operating costs
- Deliver better service to improve trading relationships

Talk to Advanced

To discover how Advanced Supplier Management can help you achieve your goals, get in touch today.

Contact us

 advanced